

Global Virtual Link

Service Brochure



Global IP Network
AS 2914

Reliable Global Connections

Get a reliable, cost-effective alternative to traditional circuits with Global Virtual Link. Offering inter-regional transport over Ethernet, the service uses the renowned scope and reliability of NTT Communications Global IP Network (GIN), ensuring it offers you a seamless experience wherever you are. The support of such a wide-reaching network gives the service a real intercontinental reach, powering virtual point-to-point Ethernet connections between North America, Asia, Europe and Australia.



Global Virtual Link

A Flexible Choice

Global Virtual Link is our standard offering for inter-region Ethernet transport and gives you the best of both worlds between Layer 2 and Layer 3 – it fuses the management capabilities of the former with the flexibility and scalability of the latter. On top of that, Global Virtual Link offers flexible usage commitments and bandwidth options from 100 Mbps to 10 Gbps, letting you choose the option that works best for you – with the added bonus of being able to easily and rapidly scale up your needs if required.

Available Port Types

In order to support Global Virtual Link, you must have a GE (Gigabit Ethernet) or 10GE port available on your router or switch to connect to us. Please see the following table for available optic and media types.

Port	Singlemode	Multimode	UTP
Gigabit Ethernet	LX	SX	Supported
Ten Gigabit Ethernet	LR	Not Supported	Not Supported

Product Specifications

Global Virtual Link is a Layer 2 Virtual Private Network (L2VPN) solution that utilizes our Multi-Protocol Label Switching (MPLS) based network infrastructure. Global Virtual Link is a pseudo-wire Ethernet edge-to-edge (PWE3) emulation complying with RFC 4448.



Availability

Seamlessly scalable to meet your needs, Global Virtual Link is available between PoP locations on the NTT Communications Global IP Network in the following countries and regions:

- **United States**
- **Japan**
- **Europe**
- **Hong Kong**
- **Singapore**
- **Australia**

For exact availability, please check with a Global IP Network representative.

Benefits

Cost-Effective

Pay only for the traffic you need with Global Virtual Link. And don't worry if you think you might need more – bursting allows you to go above the committed rate. In addition, the service uses pseudo-wire Ethernet emulation technology which runs across our backbone, helping deliver substantial cost savings. Because it uses well-known Ethernet technology, no new training investment is required either.

Flexible and Scalable

We'll provide you with a low latency solution and a flexible upgrade path for your existing network at speeds of up to 10Gbps. An upgrade in bandwidth is just a call away and can be added within days, not weeks or months, as with traditional WAN technology.

Safe and Reliable

Seeking a high level of assurance? Traffic carried via Global Virtual Link has prioritized buffering and does not leave our network, so it gets where it needs to go quickly. In addition, the service uses no Layer 3 packet analysis or routing, meaning no risk of spoofing or DDoS attacks, while providing a dynamic path that easily directs your traffic between end points.

Simple and Adaptable

While these features give you significant benefits, they are aimed at making things easy for you too. Global Virtual Link makes it simple to integrate WAN reach into an existing LAN without any of the overhead normally associated with adding WAN capabilities. Multiple traffic types such as voice, video, and data can all run on the same link, so there's no need for separate networks. Global Virtual Link is also protocol neutral, so you can run the Layer 2 or 3 protocol of your choice across your WAN.

Features

VLAN Trunk Port

- Up to 5 GVL circuits per GE trunk port
- Up to 10 GVL circuits per 10GE trunk port

Supports Customer Use of

- VLAN stacking & existing VLAN tags
- Jumbo frames
- MPLS tags

Multiple Layer 3 Protocols

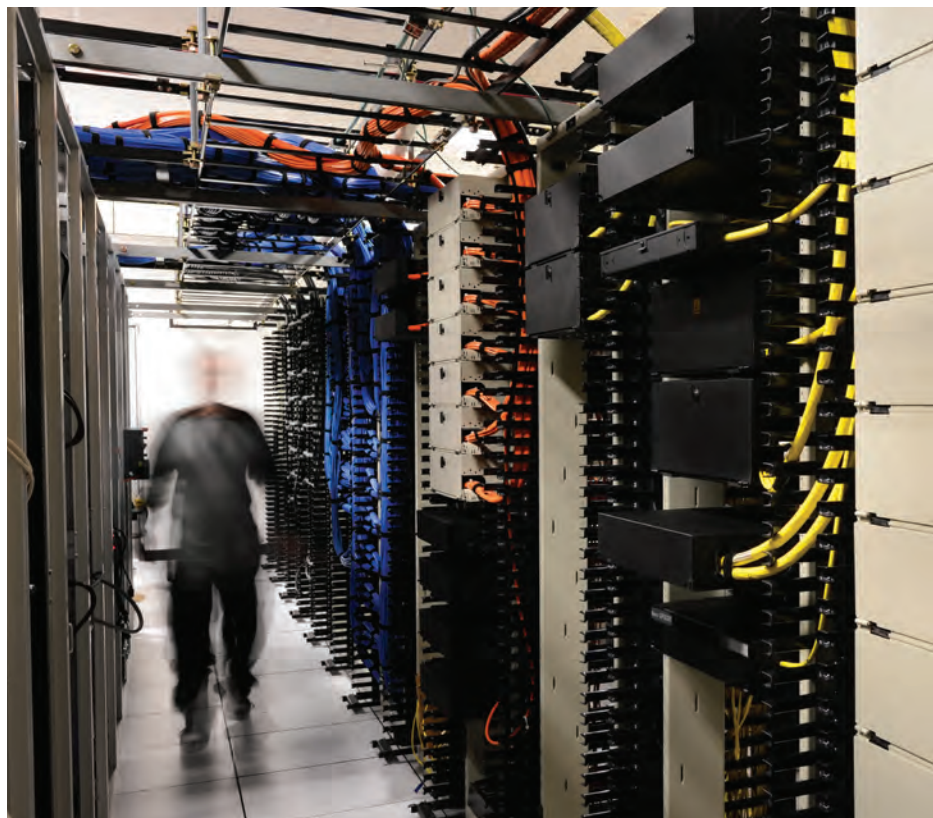
- IPv4 & IPv6
- Any other Layer 3 protocol over Ethernet

Service Level Agreement

- Availability
- Latency
- Packet loss
- Jitter

Customer Portal

- Service information & usage reporting





Global IP Network
AS 2914

For more information and updates:

info@gin.ntt.net

www.gin.ntt.net

Follow us on Twitter

@GinNTTnet @NTTCom

#globalipnetwork #AS2914

NTT Communications and the NTT Communications logo are trademarks and/or service marks of NTT Communications in the United States and other countries
©2018 NTT America. All rights reserved.

201801GVL